



Editor, Patsy Whitehead, CCC

Featured above: : Nolin RECC line technician Andy Patterson,
25 years of service.

News you can use

The Life of a Lineworker

They wake before the sun, pour steaming cups of coffee, and kiss their family goodbye. After swinging by the office to get the day’s orders, the lineworkers at Nolin RECC climb into their trucks and head out. Our outside workers come together to form a solid team with one job in mind: to deliver safe, reliable electricity. But that job can change in a million ways when rough weather steps in.

We often take power—and the men and women who provide it—for granted. Let’s take a moment and stand in their boots. Lineworkers have to work safe, smart, and efficiently—all while 40 feet in the air wearing sturdy, thick rubber gloves. On a typical day, lineworkers maintain electrical distribution lines or build service to new homes and businesses in the Nolin service area. They have a lot on their plates. But when our dispatch center calls crews to report a problem, everything else takes a backseat.

Power restoration takes precedence on lineworkers’ to-do list. These brave men and women are always on call. We have crews standing by to serve you 24 hours a day, in the middle of the night or wee hours of the morning, weekends, and holidays.

Can you imagine getting a call at 3 a.m. telling you to work outside during bad weather? Not many people are willing to face storms. Our lineworkers face harsh elements daily, all to serve you.

Lineworkers also focus on safety; the lives of co-workers are on the line. Job safety is important to everyone, no matter your occupation. But for lineworkers, there can be no slip-ups or careless actions. Mistakes can cost a limb or life. When you put your life in the hands of co-workers every day, they become more than colleagues. They’re family.

That sense of family extends to electric co-ops across the nation. One of our principles is cooperation among cooperatives. We help other co-ops in their time of need, and they extend that service to us, too. It’s reassuring to know if a



severe storm strikes, a national team of lineworkers stand ready to answer the call.

To be ready to respond no matter the situation or weather conditions, lineworkers are highly trained. Nolin RECC lineworkers go through regular training to ensure they can work safely with various kinds of equipment. The equipment gets tested regularly, too.

These highly skilled workers light our homes and businesses every day. They endure harsh weather and long hours, all to make our lives better. When you see these dedicated Nolin employees out, please take a moment to thank them. Nolin RECC lineworkers are the heart of the Co-op Nation, proud and strong.

On the inside...

- Annual meeting date 42C
- Planting for energy 42E
- Safe Electricity 42F

Spring opportunities

Nolin can be your partner to better manage energy use

Thank heavens the big chill is over. During the brutal winter, we had some of the coldest days ever recorded.

Average temperatures in January 2014 were 9 degrees below January 2013. From the night of Jan. 6 through the morning of January 7, temperatures dropped below zero 15 straight hours. The arctic temperatures, snow and ice persisted for weeks.

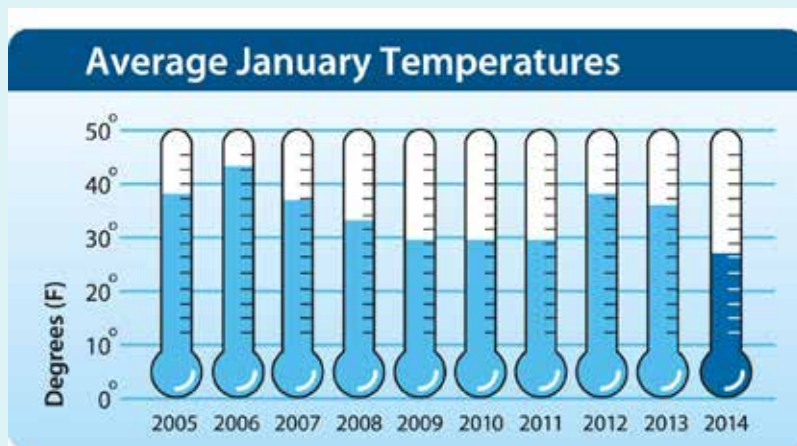
Unfortunately, bitter cold makes heating equipment run longer and use much more electricity. The good news is that spring is here, and Nolin can help you better manage energy use in the future through these programs:

- **Our energy efficiency programs.** Our Button-Up program can help save energy and money on your electric bills—month after month, year after year. By adding insulation and taking other steps, Button-Up makes your home more comfortable, and we'll rebate electric bills of qualified participants.
- **SimpleSaver.** This program provides bill credits if you voluntarily join and you will be helping to reduce peak electric demand. To sign up, call (800) 305-5493 or go to www.simplesaver.coop.
- **Budget billing.** If you sign up, no matter what the weather is outside your bill won't be a surprise. This program is designed to average your monthly electric bill so that you can budget your energy dollars. Call the Nolin RECC office at (270) 765-6153, or visit www.nolinrecc.com and click on "Residential Bill Payment" to sign up for budget billing.

Many Nolin RECC members are facing extremely difficult circumstances. Co-op members are hard-working Americans, but some may be unemployed. Many are elderly and living on fixed incomes. And many live in energy-leaking homes.

Regardless of your financial situation, we're working to help you manage your energy dollars. For example, we're asking those who need assistance in paying their winter electric bills to call us so that we can work with you in trying to set up payments. We're also working closely with community action agencies to connect members with organizations that provide assistance.

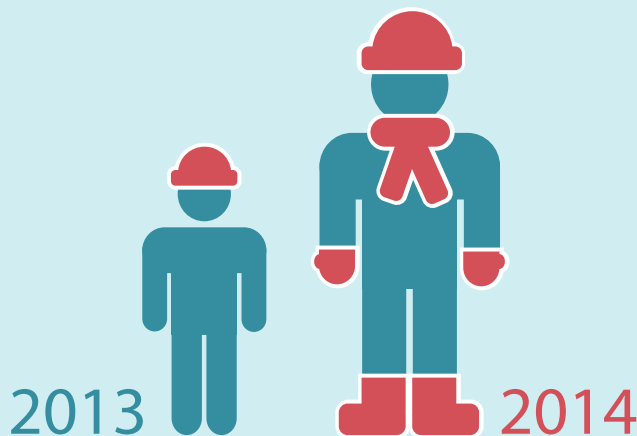
If you would like to learn more about Nolin's energy efficiency, SimpleSaver, or other programs, call the office at (270) 765-6153.



the cold hard facts

January 2014 was the coldest January in more than a decade.

30% COLDER than 2013



1911005501

Mark Calendars for Nolin's Annual Meeting June 27

The annual meeting will be a few weeks later this year, but it will still prove to be an event you don't want to miss! Mark your calendars for Friday, June 27, at John Hardin High School!

Member registration begins at 5:30 PM. After members register, they can enjoy the early entertainment, visit the health and exhibit fair, watch the children play games, or relax to a delicious dinner while waiting for the 7:00 PM business meeting. Later in the evening, sit back and enjoy country music artist and Louisville native Olivia Henken as she performs songs from her newly released original album, *The Ride*.

As a member of Team Christina on Season 5 of NBC's hit TV show, *The Voice*, Olivia captivated the imagination of the country with her stage presence, singing ability, and charm. She's headlined at major festivals and graced the stage with Kip Moore, Charlie Daniels, Dustin Lynch, Chuck Wicks, and Jason Jones. Olivia's high energy, confidence, and charisma shine throughout her performances.

Although annual meetings are loaded with fun and entertainment, they are important for other reasons. YOUR OWNERSHIP IN NOLIN RECC is very important. Each year a business meeting is held to discuss issues and new information affecting your cooperative. You have six directors that represent your interests in the co-op, and each one serves a three-year term.

The director election process is designed so that two of your six director seats are up for re-election each year. The two directors completing their term in 2014 are A. L. "Buddy" Rosenberger (District 1) and David P. Brown (District 4). Both have agreed to have their names placed on the ballots for re-election to the board.

In early June you will receive ballots in the mail along with your annual meeting official notice. It is your responsibility and privilege to vote for the director of your choice in districts 1 and 4. As a member of Nolin, you are entitled to decide who serves on the board. Please remember to vote during the director elections and return your ballot to Nolin RECC.



Nolin RECC Annual Meeting
Friday, June 27, 2014
John Hardin High School
384 W. A. Jenkins Road, Elizabethtown

Make Your Yard Work for You

Location, location, location is the mantra in real estate, but it also applies to your yard this time of year when the search is on to lower energy bills and create curb appeal. Positioning the right combination of plants and trees can yield shade, beautify, and unearth energy savings. Such smart or energy-efficient landscaping, claims the U.S. Department of Energy (DOE), can, on average, provide enough energy savings to see a return on your initial investment in less than eight years.

Again, think location. Carefully positioned trees can reduce a household's energy consumption for heating and cooling by up to 25 percent. Using computer models, the DOE determined that proper placement of only three trees on your property can save an average household between \$100 and \$250 in yearly energy costs. This spring, make your yard work for you. Just a few simple landscaping considerations can make a big difference in your home's comfort and in the efficiency

of your heating and cooling systems:

- Use trees and plants to shade a window air conditioner. Having shade can increase its efficiency by as much as 10 percent. For good airflow and access, position plants more than three feet from the air conditioner.
- Shrubs and trees can form windbreaks or protective walls that keep wind chill away from a home. That's important because wind speed lowers outside air temperatures, and ultimately saves on higher heating costs. Common turf grass and other low-growing plants are ideal barriers. So are evergreens, especially when combined with a wall or fence to deflect or even lift wind over a home. For best protection, plan on leaving between two to five times the mature height of the trees or shrubs between the windbreak and the protected home.

Made in the Shade

Indoors, you may be protected from the sun's rays, but your energy bill can rise as your air conditioner works harder to keep

your house cool and comfortable. Planting shade trees can add to your comfort at home by dropping the surrounding air temperature by as much as nine degrees Fahrenheit. But choosing just the right tree may require a compass and patience while they grow to work for you:

- When selecting shade trees, keep in mind the mature height of the tree and the shape of its shade canopy in relation to the height of your home. These factors are important because they should influence how far from the house you decide to plant a tree. Always avoid planting near underground utility lines.

- Shading takes time—a 6-foot to 8-foot deciduous tree planted near a house will begin shading windows in a year. Depending on the species and the home, the tree will shade the roof in five to 10 years.

- Make planting shade trees due west of west-facing windows your first priority.

- Select a tree that can be planted within 20 feet of the window and that will grow at least 10 feet taller than that window. If you have the space, use as many trees as needed to create a continuous row along all major west- and east-facing windows.

- Contrary to intuition, the least energy-efficient place for a tree is to the south of a house.

Different trees can serve a variety of purposes. To block summer heat while letting sun filter through in the winter months, use deciduous trees or those that lose their leaves seasonally. Evergreens and shrubs, on the other hand, are ideal for providing continuous shade and blocking heavy winds. Also, keep in mind that not all shade plants are tall. Shrubs and sturdy groundcover plants also provide good shade by reducing heat radiation and cooling air before it reaches your home's walls and windows.

Start planting savings and let your yard do all the work—a well-placed tree, shrub, or vine can deliver effective shade, act as a windbreak, and reduce your energy bills.

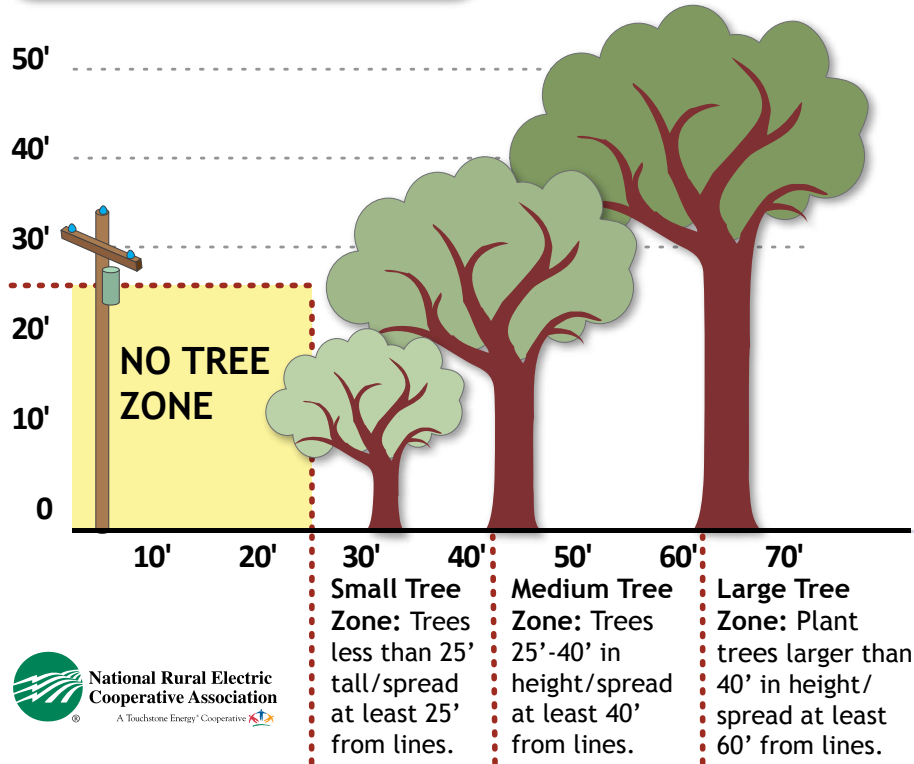
Sources: U.S. Department of Energy, U.S. Environmental Protection Agency, and Energy.gov



U.S. Department of Agriculture researchers are developing hearty plants, shrubs, grasses, and vegetation that are being used as windbreaks in residential landscaping. By reducing wind speed, these barriers can help keep your home warmer in the winter and heating costs down. Source: U.S. Department of Agriculture

Planting trees? Stay away from power lines

Tree Planting Guide



Look Out Below: Call Before You Dig

Whether it's a dreamed-of deck addition or a landscaping masterpiece, summer weather is a great time for outdoor improvement plans.

But if your planned projects include digging, like planting a tree or bringing in a backhoe for trench work, you'll have to wait a few more days so the job can be done safely. Underground utilities, such as buried gas, water, and electric lines, can be a shovel thrust away from turning a summer project into a disaster.

A few days prior to digging, call 811 to find out where utility lines run on your property.

Your call will be routed to a local "one call" center. Tell the operator where you're planning to dig and what type of work you will be doing, and affected local utilities will be notified.

In a few days, a locator will arrive to designate the approximate location of any underground lines, pipes, and cables with flags or marking paint so you will know what's below. After markings are in place, you can begin the project safely.

Although many homeowners tackling do-it-yourself digging projects are aware of "Call Before You Dig" services, the majority don't take advantage of the service. A national survey

showed that only 33 percent of homeowners called to have their lines marked before starting digging projects, according to the Common Ground Alliance, a federally mandated group of underground utility and damage prevention industry professionals.

Although light gardening typically doesn't call for deep digging, other seemingly simple tasks like planting shrubs or installing a new mailbox post can damage utility lines. A severed line can disrupt service to an entire neighborhood, harm diggers, and potentially result in fines and repair costs.

Never assume or guess the location or depth of underground utility lines. There's no need: the 811 service is free, prevents the inconvenience of having utilities interrupted, and can help you avoid serious injury. For more information about local services, visit www.call811.com. Sources: Common Ground Alliance, SafeElectricity.org



**Know what's below.
Call before you dig.**

WARNING...



There's a reason we post danger signs at substations.

The high-voltage equipment inside the chain link fence is dangerous. Pay attention to the signs and warn children not to play near substations, electrical equipment, or power lines.

Save energy. Help the environment.
Pocket the rewards.

Sign up now & receive
a \$10 Bonus!

Sign up for **SimpleSaver** and pocket the rewards.

We will credit your bill up to \$20 annually for each central air conditioner you enroll. Sign up your 40-gallon or greater electric water heater and receive an additional \$10 annual credit. In exchange, we install a switch to cycle the units briefly when electrical demand peaks.

SimpleSaver...saving energy just got more rewarding.

1-800-305-5493
www.simplesaver.coop

NECA
Rural Electric Cooperative
A Touchstone Energy Cooperative



LADDERS are involved in more **ELECTROCUTIONS** than any other product

- CPSC report



Safe Electricity offers the following tips to use when working with ladders:

- Keep equipment and yourself at least 10 feet from power lines.
- Work only when weather permits. Rain is a good conductor of electricity, and wind could blow a ladder out of control and into a power line.
- Never trim near power lines. Call professional tree trimmers to do the job.
- Never use water or blower extensions to clean gutters near electric lines. Contact a professional maintenance contractor.
- Follow safety guidelines whether you use an aluminum, wooden, or fiberglass ladder. Although some materials are better conductors than others, all ladders require the same precautions.

For more information on protecting yourself from outdoor electrical hazards, visit:

 **Safe Electricity.org**[®]

New Member Credits

All members signing up for new service with Nolin receive a short survey. Members who return the completed survey to Nolin are automatically eligible to win a \$20 credit on their electric bill. Each month, one name is drawn and a lucky Nolin member receives a bill credit on their next statement. Congratulations to our latest winner, **Nicole D. Martin, of Elizabethtown.**

Online payments

Access your Nolin RECC account through our Web site at **www.nolinrecc.com**. Click on "YourAccount" to check your consumption history and make payments by debit card, Visa, or MasterCard. To apply for budget billing and automatic draft online, click on "Residential Bill Payment."

We've Got Your \$25 Number! \$25 WIN \$25 Worth of FREE Electricity

Nolin News features a contest called "We've Got Your Number." Hidden inside this issue are 2 randomly selected member account numbers. If you spot your account number, contact the Member Services Department at (270) 765-6153, and **win a \$25 CREDIT on your electric bill.** You must identify your number and call by the 15th day of the month's issue containing your number. Account numbers could be anywhere in your *Nolin News*!

Another great scholarship opportunity

The Kentucky Women in Rural Electrification (W.I.R.E.) will award up to three scholarships in the amount of \$1,000 each to Kentucky college students.

The Kentucky W.I.R.E. is an organization of wives of rural electric cooperative directors, managers, and other key employees. Its goal is to further the public's understanding and appreciation of the rural electric program.

The scholarship is open to any eligible student whose immediate family is served by a Kentucky rural electric cooperative. To qualify, applicants must be a junior or senior with at least 60 hours of credits at a Kentucky college or university by the start of the fall term.

To apply, call the Nolin office at (270) 765-6153 and ask for Patsy Whitehead. **Deadline for applications is May 9.**



Electric cooperative employees, directors, managers, and their relatives, and those of Big Rivers Electric Corporation, East Kentucky Power Cooperative, and the Kentucky Association of Electric Cooperatives, are not eligible for the W.I.R.E. scholarship.

HOW TO REACH NOLIN RECC

ELIZABETHTOWN OFFICE

411 Ring Road, Elizabethtown, KY 42701-6767
8:00 a.m.-5:00 p.m., Mon-Fri • (270) 765-6153

RADCLIFF OFFICE

101 West Lincoln Trail Blvd., Radcliff, KY 40160
8:00 a.m.-5:00 p.m., Mon-Fri • (270) 351-2199
(Office closed from 12:30-1:30 daily)

TOLL-FREE BUSINESS CALLS — 1-888-637-4247

EMERGENCY PHONE NUMBER — (270) 769-6396

EMERGENCY TOLL-FREE CALLS — 1-800-572-1147

Web site: www.nolinrecc.com
e-mail: comments@nolinrecc.com

BOARD OF DIRECTORS

David P. Brown
Gene Straney
A.L. Rosenberger
Lawrence Ireland
R.E. "Rick" Thomas
Linda Grimes

ATTORNEY

John J. Scott

President & CEO

Michael L. Miller

NOLIN
RURAL ELECTRIC COOPERATIVE CORPORATION