



Editor, Patsy Whitehead, CCC

Featured above: Nolin RECC Customer Service Rep
Jamie Beavin, 2 years of service

Comments from the President and CEO

Shaping our youth for their future

You may recognize one of the five students on the cover of this month’s *Kentucky Living* magazine! These remarkable teens are your 2016 Nolin RECC Washington Youth Tour delegates and they competed with other local youth to earn a trip in June to Washington, D.C., for the 52nd Annual Electric Cooperative Youth Tour. Young people who experience Youth Tour have the opportunity to explore our nation’s capital, make lasting friendships, engage in leadership training, learn a bit about how our government operates, and see the impact electric cooperatives have on the legislative process.

Youth Tour is an amazing program, and Nolin is proud to be one of the electric cooperatives across the country that participate. Over the past five decades, nearly 50,000 students have visited Washington through Youth Tour.

The Washington Youth Tour is not the only program we sponsor for high school students. Nolin also awards college scholarships to graduating seniors who wish to further their education. In fact, we even offer a continuing education scholarship to a member who plans to go back to college after spending time away from the classroom. Altogether, Nolin awarded over \$15,000 in scholarships this year alone!

The importance of educating and engaging young people in our community has always been—and will always be—a priority for your cooperative. Oftentimes we hear students say, “I’ve been waiting until I was old enough to enter the Youth Tour” or “My sister was awarded a scholarship and I hope to earn one too.” Nolin’s tradition of helping youth succeed has become well-known throughout our local community and in our school systems.

You will meet the Washington Youth Tour students along with our college scholarship recipients in this month’s *Nolin News*. We’re extremely proud to introduce these outstanding leaders to our membership, and we plan to continue these amazing programs for years to come. It’s our way of making a difference in the communities we serve!



Carson O’Daniel, center and in the white cap, joins the other Nolin RECC Washington Youth Tour delegates for a goodbye hug after returning from D.C. Left to right are Luke Gattis, Lindsey Shelton, Carson, Evan Greenwell, and Waverly Williams.

On the inside...

Saving Energy Dollars	28B
Nolin Youth Delegates.....	28E
Scholarship Recipients	28F

Comfort and Savings

Buyer saves energy and gets a better manufactured home

When Joey and Jenna Reed began looking for a new mobile home, they talked to their dealer and Nolin RECC and were able to qualify for an ENERGY STAR upgrade that is providing additional comforts and significant monthly savings on their electric bills.

“My wife loves it,” Joey says. “She likes the look. She likes not having cold floors during the winters, and it’s affordable to live here with our electric bills being as low as \$69 one month this year. This house is quite a bit better. We love it.”

The Hardin County couple says they are enjoying many features of the ENERGY STAR Manufactured Home, which has a high-efficiency heat pump, additional insulation in the floor and attic and thicker walls. The home’s double-pane windows feature energy-efficient glass—called low-e—that reduces heat from escaping outside. This past winter their highest electric bill was about \$200.

“The Reeds are paying hundreds of dollars less than what they would have paid in a standard manufactured home during the winter months,” says Todd Drake, the Nolin RECC Energy Services Coordinator who worked closely with

the family. “The enhanced features of an ENERGY STAR Manufactured Home will provide more comfort with lower electric bills.”

The Reeds purchased their manufactured home residence through Trading Post Homes located in Shepherdsville and worked closely with Drake throughout the process. The program is available through a wide range of participating mobile home dealers, from large companies such as Clayton Homes to smaller dealers.

Since the ENERGY STAR-certified home uses substantially less energy for heating, cooling, and water heating than a standard manufactured home, many participants are enjoying average savings of about \$1,200 each year.

Drake strongly encourages members who are buying new manufactured housing to inquire with the dealer whether they qualify for the ENERGY STAR Manufactured Home Program upgrade. “In most cases, it’s free to you at participating dealers, and the members who have taken advantage of this program love it, because they save month after month, year after year, in lower electric bills,” says Drake.



Nolin RECC Energy Services Coordinator Todd Drake, right, worked closely with Joey Reed to ensure the family’s new ENERGY STAR manufactured home met all energy-efficiency requirements.



To be eligible for an upgrade to an ENERGY STAR Manufactured Home, the new manufactured home must meet the following criteria:

- ★ The home must be all-electric
- ★ Primary source of heat must be a heat pump and meet federal minimum efficiency guidelines
- ★ Must meet United States Environmental Protection Agency (EPA) and Systems Building Research Alliance (SBRA) guidelines as an ENERGY STAR Manufactured Home
- ★ Home must be installed by the manufacturer and residence must be on lines served by Nolin RECC or one of Kentucky’s Touchstone Energy Cooperatives’ 16 owner-members

Nolin has programs to recycle old appliances, offers rebates on new ENERGY STAR appliances, and provides free energy audits and other programs to help its members to save energy and lower their electric bills.

Our online home energy evaluation provides a powerful link directly to your monthly billing information to instantly analyze where energy is being used in your home. Visit www.nolinrecc.com and click on *BillingInsights*.

To learn more about Nolin’s Touchstone Energy Home programs and rebates, contact Todd Drake at (270) 765-6153 ext. 3330.

Stay focused on safety during harvest

During harvest season, many farmers reap the benefits of advancement in agricultural technology. With the help of GPS auto-steer devices, farmers are able to decrease driver error and maximize productivity. Yet despite these advances, safety risks remain. To help farmers stay out of harm's way, Safe Electricity shares tips for a safe harvest.

Regardless the technology used on the farm, keep the following electrical safety guidelines in mind:

- ❑ Use a spotter when operating large machinery near power lines.
- ❑ Keep equipment at least 10 feet from power lines—at all times, in all directions.
- ❑ Look up and use care when moving any equipment such as extending augers or raising the bed of grain trucks around power lines.
- ❑ Inspect the height of farm equipment to determine clearance.

- ❑ Always set extensions to the lowest setting when moving loads to prevent contact with overhead power lines. Grain augers should always be positioned horizontally before being moved.
- ❑ Never attempt to move a power line out of the way or raise it for clearance.
- ❑ If a power line is sagging or low, contact Nolin RECC at (270) 765-6153.

If your equipment does make contact with a power line, do not leave the cab. Immediately call 911, warn others to stay away, and wait for the utility crew to cut the power.

The only reason to exit equipment that has come into contact with overhead lines is if the equipment is on fire, which is rare. However, if this is the case, jump off the equipment with your feet together and without touching the ground and machinery at the same time. Then, still keeping your feet together, hop to safety as you leave the area.

More information on electrical safety is at SafeElectricity.org.

LIQUIDLIBRARY/THINKSTOCK

Nolin Rural Electric Cooperative Corporation Electric Rates

The following rates and charges for the consumers of Nolin Rural Electric Cooperative were in effect as of June 1, 2011.

(kwh=kilowatt-hour)

SCHEDULE 1		SCHEDULE 4 – Industrial	
Residential, Farm, Non-Farm, Trailers & Mobile Homes		Demand Charge	
Rates:		Per Kilowatt of Billing Per Month	\$4.95
Customer Charge	\$9.04 per month	Energy Charge	
All kwh Charge	.08598 per kwh	First 3,500 kwh per month	.08248
The minimum monthly charge for single-phase service is \$9.04.		Next 6,500 kwh per month	.06789
		Over 10,000 kwh per month	.06410
SCHEDULE 2		SCHEDULE 5 – Rural Lighting	
Commercial, Small Power, Single-Phase & Three-Phase Service		High-pressure Sodium	
Rates:		100-Watt	75 kwh \$10.06
Customer Charge	\$16.82 per month	LED (Effective January 8, 2016)	
All kwh Charge	.09274 per kwh	70-Watt	24 kwh \$9.51
The minimum monthly charge for single-phase service is \$16.82.			
SCHEDULE 3 — Large Power			
Customer Charge	\$28.50 per month		
Demand Charge			
Per Kilowatt of Billing Demand Per Month	\$4.95		
Energy Charge			
First 2,500 kwh per month	.07845		
Next 12,500 kwh per month	.07337		
Over 15,000 kwh per month	.07184		

FUEL ADJUSTMENT CLAUSE

All rates are applicable to the Fuel Adjustment Clause and may be increased or decreased by an amount per kwh equal to the fuel adjustment amount per kwh as billed by the wholesale power supplier plus an allowance for line losses. The allowance for line losses will not exceed 10% and is based on a 12-month moving average of such losses. This fuel clause is subject to all other applicable provisions as set out in 807 KAR 5:056.

FREE Round-Trip Ticket to D.C.



Five local high school students were given the opportunity of a lifetime this past June! The group headed to Washington, D.C., to tour historic monuments and museums and learn how our government operates. They also met with elected representatives in the U.S. House and Senate to discuss the process of government and mounting concerns that affect our country. And the best part...the trip was provided by Nolin RECC at no cost to the students!

The Nolin delegation joined 90 other high school upcoming seniors from across the state as they began their journey. Once in D.C. they were a part of a nationwide youth program sponsored by the National Rural Electric Cooperative Association (Arlington, VA) where 1,700 competitively selected high school students united for the weeklong annual Washington Youth Tour.

Interested high school juniors whose parents are members of Nolin apply for the trip with a simple form that takes no longer than 3 minutes to complete. But the selection process after this point becomes very competitive!

Nearly 30 applications were submitted for the trip. As part of the competition process, students are required to write a 500-word essay, complete a test on cooperatives, and visit the Nolin office for a personal interview. All students completing the application and interview are treated to a day in Frankfort to tour the Capitol building and the Kentucky Vietnam Memorial.

There is nothing hard about the process, but it does require commitment and accountability from participants. The rewards are well worth the time students invest in the program.



The five Nolin RECC Washington Youth Tour students are featured on the cover of *Kentucky Living*. The 2016 delegates are, left to right, Evan Greenwell, Waverly Williams, Luke Gattis, Lindsey Shelton, and Carson O'Daniel.

Interested in applying?

Applicants for the Washington Youth Tour must be juniors in high school and their parents or legal guardians must be a member of the co-op and live on Nolin RECC lines. The process is very simple and includes a brief essay, quiz, and personal interview. Watch for next year's application in the February 2017 *Nolin News*.

0821025029

Each participant in the Washington Youth Tour competition was asked to write an essay on “My Life without Electricity.” Here are a few lines from each of the Youth Tour students’ essays.

“Can our generation possibly imagine what life would be like without electricity? Experiencing a short-term power outage might give us a taste of what life would be like without electricity, but I do not believe most of us living today have any concept of how drastically changed our reality would be if we truly had to live without electricity.”

– Luke Gattis



“Electricity truly is more than flashing lights and cell phones. It provides countless opportunities to make our world a better and safer place to live. I’m fortunate to have the opportunities that electricity will provide me.”

– Evan Greenwell

“Quite honestly, electricity impacts every aspect of my life in one way or another. Even during a very temporary power outage, the sense of isolation, vulnerability, and discomfort sets in quickly. Electricity is so intricately woven into every aspect of life that existing without it seems nearly impossible.”

– Carson O’Daniel



“During any normal day, you can hear the humming of the refrigerator, the running of the washer and dryer, the beeping of the oven going off. But one day, all those sounds were gone, the snow and ice had come down so hard and so fast it completely shut down everything; my entire world. I realized how my life revolved completely around Nolin RECC and the electricity they provided for my family.”

– Lindsey Shelton



“Electricity is essential to my daily routine, and yet I don’t give the time to appreciate it. In a world that functions around technology, it would be difficult to imagine a life without it. Not only would an ‘unplugged’ world be a nightmare for most teens and adults, but some of the simple luxuries citizens take advantage of every day would cease to exist.”

– Waverly Williams

Future Investments

Nolin RECC 2016 Scholarship Recipients

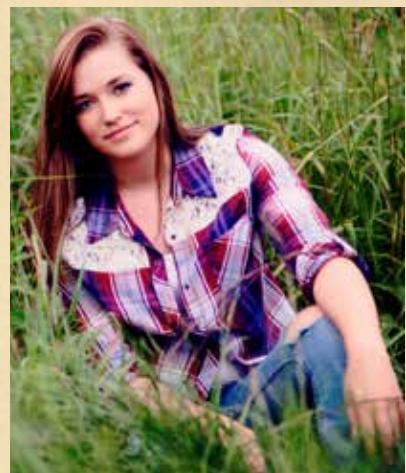
Eight local students are attending college this fall with a little help from Nolin RECC. This year, Nolin awarded \$15,500 in college scholarships to students whose parents or legal guardians are members of Nolin. Included in those awards is a scholarship recipient who is returning to school after spending time away from the classroom.

Thanks to all those who took time to submit scholarship applications. There are so many outstanding students in our community, and Nolin RECC recognizes your hard work and accomplishments!

The 2016 Nolin RECC scholarship recipients are Mary Adams, Victoria Bradley, Jennifer Dugan, Sara Gray, Brooke Hawkins, Devon Jobson, Alyssa Miller, and Chase Watson.



Mary Adams is the daughter of Eric and Peggy Adams. She is a graduate of White Haven Christian Academy Homeschool and plans to pursue a degree in political science at Western Kentucky University.



Victoria Bradley, a graduate of Central Hardin High School, will attend Elizabethtown Community & Technical College to begin her studies in occupational therapy. She is the daughter of Elena Scott and Lloyd Bradley.

**Applications
for the 2017
Nolin RECC
Scholarship will
be available
in February.**



Jennifer Dugan is Nolin's continuing education scholarship recipient. She and her husband, Christopher, have two sons. Jennifer is pursuing a degree in education at Northern Kentucky University.



Sara Gray is the recipient of Nolin's \$5,000 Bob Wade Sr. Memorial Scholarship. Her parents are Gilbert and Jessica Gray. Sara is attending Elizabethtown Community & Technical College to begin her studies in dental hygiene.



Alyssa Miller is the daughter of Arthur Miller and Jane Varney. A graduate of John Hardin High School, Alyssa now attends Campbellsville University and is majoring in education.



Brooke Hawkins, a graduate of Elizabethtown High School, is the daughter of Jason and Jennifer Hawkins. Brooke is attending Western Kentucky University to study nursing and psychology.



Devon Jobson is a graduate of North Hardin High School. His parents are Matthew and Wendy Jobson. Devon is attending the University of Kentucky to earn a degree in music education.



Chase Watson is a graduate of LaRue County High School and is the son of Jeffrey Watson and Tracy Tharp. Chase is enrolled at Elizabethtown Community & Technical College to earn his degree in business.

WARNING!

There's a reason we post danger signs at electrical substations! The high-voltage equipment inside the chain link fence is dangerous. Pay attention to the signs and warn others not to go near substations, electrical equipment, or power lines!



1225001101

The Nolin RECC offices will be closed Monday, September 5, in observance of Labor Day

Online payments

Access your Nolin RECC account through our Web site at www.nolinrecc.com. Click on "YourAccount" to check your consumption history and make payments by debit card, Visa, or MasterCard. To apply for budget billing and automatic draft online, click on "Residential Bill Payment."

New Member Credits

All members signing up for new service with Nolin receive a short survey. Members who return the completed survey to Nolin are automatically eligible to win a \$30 credit on their electric bill. Each month, one name is drawn and a lucky Nolin member receives a bill credit on their next statement. Congratulations to our latest winner, **Samantha Hubbard, of Vine Grove.**

We've Got Your Number! \$25
WIN \$25 Worth of FREE Electricity

Nolin News features a contest called "We've Got Your Number." Hidden inside this issue are two randomly selected member account numbers. If you spot your account number, contact the Member Services Department at (270) 765-6153, and **win a \$25 CREDIT on your electric bill.** You must identify your number and call by the 15th day of the month's issue containing your number. Account numbers could be anywhere in your *Nolin News!*

HOW TO REACH NOLIN RECC

ELIZABETHTOWN OFFICE

411 Ring Road, Elizabethtown, KY 42701-6767
8:00 a.m.-5:00 p.m., Mon-Fri • (270) 765-6153

RADCLIFF OFFICE

101 West Lincoln Trail Blvd., Radcliff, KY 40160
8:00 a.m.-5:00 p.m., Mon-Fri • (270) 351-2199
(Office closed from 12:30-1:30 daily)

TOLL-FREE BUSINESS CALLS — 1-888-637-4247

PAY DIRECT BY PHONE TOLL FREE — 1-855-356-6359

FOR EMERGENCIES — (270) 765-6153

Web site: www.nolinrecc.com
e-mail: comments@nolinrecc.com

BOARD OF DIRECTORS

David P. Brown
Gene Straney
A.L. "Buddy" Rosenberger
Lawrence Ireland
R.E. "Rick" Thomas
Linda Grimes

ATTORNEY

John J. Scott

President & CEO

Michael L. Miller

NOLIN
RURAL ELECTRIC COOPERATIVE CORPORATION

