



Editor, Sarah Fellows

Featured above: Communications Manager  
Sarah Fellows, 2 years of service

## Comments from the President & CEO

# Thankful for opportunities to serve

In a year that has brought more than its fair share of challenges, we might find it difficult to be thankful. But despite this, Nolin RECC has found that opportunities to serve have given us reason to have gratitude.

With the pandemic restricting visitors to those in long-term care facilities and in the hospital, we wanted to find a way to help connect our communities' most fragile residents with the world they couldn't get out to see. Since March, we have been able to donate hundreds of copies of *Kentucky Living* magazine to Baptist Health Hardin and local assisted-living facilities to bring a glimpse of the commonwealth to them.

We were also able to share reusable bags and caulk we received through our partnership with East Kentucky Power Cooperative and Touchstone

Energy with Warm Blessings Soup Kitchen, Helping Hand of Hope and Hardin County Habitat for Humanity to help in their missions.

Additionally, Nolin has had the chance to donate poles that were retired from utility service to local organizations. You can see these poles that were given a new purpose when you visit the McDougal Lake parking area in LaRue County and the Emerald Cathedral Amphitheater near Freeman Lake in Elizabethtown.

Even beyond our immediate area, Nolin was given a chance to serve. In September, Nolin sent 10 line technicians and two mechanics to help in recovery work after Hurricane Sally devastated the Gulf Coast of Alabama and parts of Florida. This highlights an important co-op principle—Cooperation Among



Habitat for Humanity was able to put caulk Nolin donated to good use on local homes.

Cooperatives. With nearly 100% of its system down, Alabama's Baldwin EMC put out the call for fellow co-ops to help, and Nolin was proud to respond within 24 hours of Sally making landfall. Nolin crews spent 10 days helping replace several of the over 2,000 broken poles in Baldwin's service area.

Being a good neighbor is an important part of our commitment to the communities we serve. Even in the toughest times, we can find reasons to be grateful. For Nolin, the opportunity to serve our neighbors is something for which we are thankful this Thanksgiving and always.



Greg Lee  
President & CEO



Nolin delivered extra copies of *Kentucky Living* magazine to Sunrise Manor in Hodgenville in September for residents to enjoy. Photo: Sarah Fellows



Retired utility poles serve as the foundation for seats in the Emerald Cathedral Amphitheater near Freeman Lake in Elizabethtown. Photo: Sarah Fellows

## Operation Round-Up

# Gratitude for past board members

Operation Round-Up is a voluntary program for Nolin RECC members who want to give back to their communities by “rounding up” their bills to the nearest dollar. We have 6,650 participating members who help organizations like the Community Health Clinic and Rachel’s Fun for Everyone Project through community impact grants. Since the program began in 2006, the

Operation Round-Up board of directors has awarded almost \$240,000 to local organizations and projects.

The Operation Round-Up board of directors consists of Nolin members who volunteer their time to promote the program and select grant recipients. We would like to recognize and thank the following past board members for their years of service to our members and communities.



June Thornberry-Raine served as a board member from 2006-2020 including from 2006-2010 as chair. Photo: Sarah Fellows



Mike Eades served on the board from 2006-2019. Photo: Patsy Whitehead



Mark Rock served on the board from 2006-2019, including 2006-2010 as vice-chair and chair from 2010-2019. Photo: Patsy Whitehead



Daphne Loyall served from 2006-2015 including serving as vice-chair 2010-2015. Photo: Patsy Whitehead



Debbie Owens served from 2006-2020 including 2017-2020 as vice-chair. Photo: Patsy Whitehead



Marion Henderson served from 2010-2016 including 2015-2016 as vice-chair. Photo: Patsy Whitehead



Cheryl Thomas served as secretary-treasurer from 2006-2019. Photo: Patsy Whitehead

## Sign up for Operation Round-Up and win cash!

Those members who sign up to participate in Operation Round-Up during the month of November, or already participate, will be entered in a drawing to win cash!

We are giving away one \$100, one \$200 and one \$300 prize to the winners of the drawing. Call (270) 765-6153 to sign up—the deadline to be entered in the drawing is November 30.



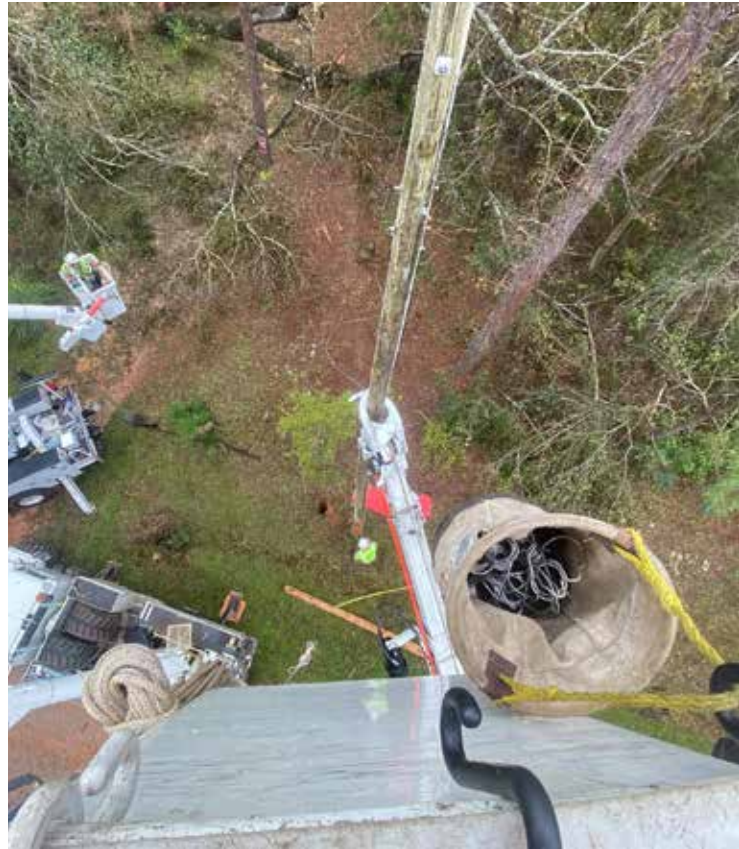
# Co-ops to the rescue

In response to the devastation caused by Hurricane Sally along Alabama's Gulf Coast, Nolin RECC sent 10 line technicians and two mechanics to aid in recovery efforts. The Category 2 hurricane caused significant damage when it made landfall early on September 16 leaving more than

a half-million homes without power in Alabama, Florida and Louisiana. The Nolin crew joined line workers from 92 other co-ops in 12 states giving mutual aid to Baldwin EMC, a co-op that serves the southern part of Alabama and part of Florida including Gulf Shores and Orange Beach.



Nolin employees, from left, Jeff Brooks, Russ Morse, Chris Bell, Josh Hess, Cody Sullivan, Cameron Hernandez, Kenny Brown, Jake Leasor, Jamie Price and Ryan Ray. Photo: Sarah Fellows



Above, a bird's-eye view of restoration work in Alabama. At left, Nolin crews encounter several broken poles on a stretch of road in southern Alabama. Photos: Ryan Ray



# Capital credit retirement

Nolin is pleased to announce that we are retiring nearly \$1.3 million of previously allocated capital credits for the years 1991 and 2019 as well as East Kentucky Power Cooperative capital credits from 1972 and 1973. This means that anyone who was a member and received a capital credit allocation for any of those years can expect to receive a bill credit or a check in

the mail sometime this month or in December.

Generally speaking, the amount of the capital credit retirement you receive is determined by the amount of your electric bills. This entitles you to your fair share of the margin distribution after expenses are paid. A discounted retirement of any accumulated capital credits is payable to the estate of deceased members.

Application for discounted retirement can be made by an authorized representative of the estate. Call us or stop by our Elizabethtown or Radcliff offices for more information.

Unless you need to contact us about a deceased member's estate, you do not have to do anything to receive your allocation. If you have any questions about how capital credits work, call our office at (270) 765-6153.

# We are a voice for our members

Nolin RECC recently hosted Kentucky's 18th District Representative Samara Heavrin to talk about key issues that impact our members. A Grayson County native and former Washington Youth Tour participant, Rep. Heavrin has been serving in the Kentucky House of Representatives since 2019. Cooperatives across the commonwealth work closely with legislators in both political parties to ensure that the voice of our members is heard.

Nolin President & CEO Greg Lee and Rep. Samara Heavrin.  
Photo: Allison Coffey



## Office closing:

Our Elizabethtown and Radcliff offices will be closed Nov. 26 and 27 in observance of Thanksgiving.

### HOW TO REACH NOLIN RECC

#### ELIZABETHTOWN OFFICE

411 Ring Road, Elizabethtown, KY 42701-6767  
8:00 a.m.–5:00 p.m., Mon-Fri • (270) 765-6153

#### RADCLIFF OFFICE

101 West Lincoln Trail Blvd., Radcliff, KY 40160  
8:00 a.m.–5:00 p.m., Mon-Fri

**TOLL-FREE BUSINESS CALLS** — 1-888-637-4247

**PAY DIRECT BY PHONE TOLL FREE** — 1-855-356-6359

**FOR EMERGENCIES** — (270) 765-6153

Website: [www.nolinrecc.com](http://www.nolinrecc.com)  
email: [comments@nolinrecc.com](mailto:comments@nolinrecc.com)

### BOARD OF DIRECTORS

David P. Brown  
Gene Straney  
A.L. "Buddy" Rosenberger  
Lawrence Ireland  
R.E. "Rick" Thomas  
Linda Grimes  
**ATTORNEY**  
John J. Scott  
**President & CEO**  
Greg Lee



Download our  
SmartHub App



A Touchstone Energy® Cooperative

