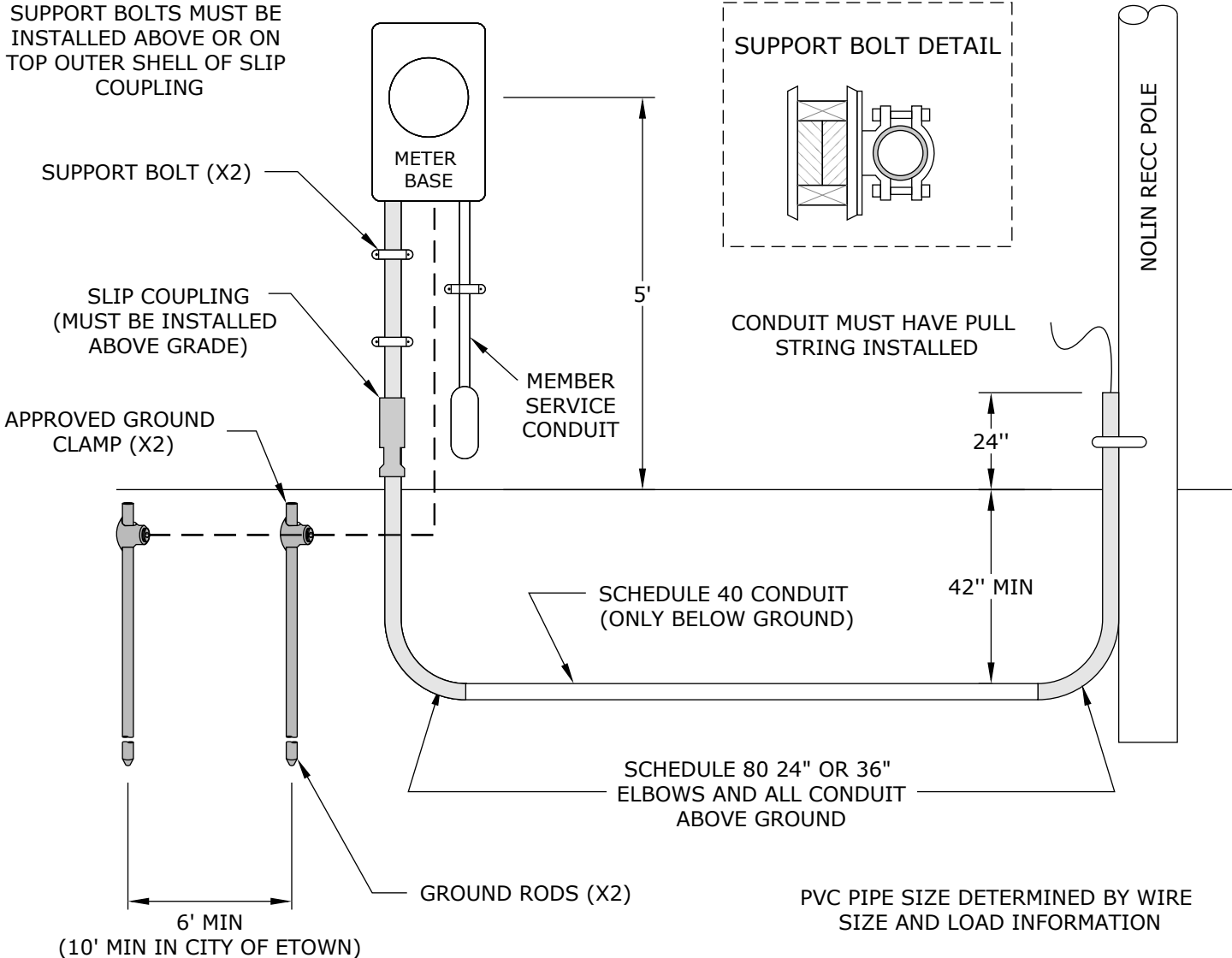


SUPPORT BOLTS MUST BE INSTALLED ABOVE OR ON TOP OUTER SHELL OF SLIP COUPLING



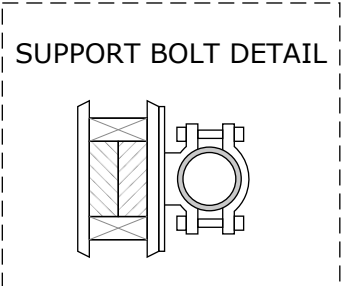
SUPPORT BOLT (X2)

SLIP COUPLING (MUST BE INSTALLED ABOVE GRADE)

APPROVED GROUND CLAMP (X2)

METER BASE

MEMBER SERVICE CONDUIT



CONDUIT MUST HAVE PULL STRING INSTALLED

SCHEDULE 40 CONDUIT (ONLY BELOW GROUND)

SCHEDULE 80 24" OR 36" ELBOWS AND ALL CONDUIT ABOVE GROUND

GROUND RODS (X2)

PVC PIPE SIZE DETERMINED BY WIRE SIZE AND LOAD INFORMATION

- DIAGRAM NOT TO SCALE
- CONTACT NOLIN RECC LINE DESIGN DEPARTMENT BEFORE STARTING ANY WORK
- CALL 811 BEFORE DIGGING

NOTES

All elbows (above and below ground) and conduit above ground shall be schedule 80 PVC. Schedule 40 PVC conduit is only acceptable below ground.

42" ditch from top of conduit to final grade will be inspected by Nolin's Service department before backfilling.

Ground is no. 6 CU continuous ground wire (City of E-town requires 12" of bare ground wire from the meter base and the remainder is enclosed in PVC to 3" below ground level).

Ground rods should be minimum 8' x 1/2" diameter solid copper rod or a 5/8" solid galvanized rod. Ground wire is attached with approved ground clamps.

Underground service entrance conduit shall enter the bottom left side of the meter base. Service entrance conduit entering the right side of the meter base is only permissible when member service conduit is occupying the left side.



MAIN OFFICE: 270-765-6153

DRAWN BY:
MATTHEW
VULETA

APPROVED BY:
NOLIN RECC
LINE DESIGN



UNDERGROUND SERVICE
FROM POLE-MOUNTED
TRANSFORMER TO
DWELLING/FACILITY

LAST REVISION

12/17/2020

NOTES

1. All meter base (service entrance) locations must be approved by Nolin’s Line Design Department prior to service installation.
2. Meter base must have a by-pass lever. Do not use a small meter base.
3. All electric connections, equipment, and equipment grounds shall comply with the National Electrical Code.
4. The member shall furnish and maintain for the life of the electrical service all conduits, conduit straps, grounds, disconnects, meter base, and all conductors beyond Nolin’s point of delivery.
 - In three phase applications, Nolin shall furnish the meter base.
5. Nolin shall furnish and maintain the meter and service drop.
6. Energizing of the member’s service is contingent upon an approved State or City electrical inspection.
7. The lower support bolt may be attached to the upper outside sleeve of the slip coupling.
8. Conduit must be secured to pole with one 2-hole conduit strap.
9. No more than two 90 degree elbows are allowed in one run of conduit.
10. Conduit shall not be heated to bend.
11. The slip coupling should be installed a minimum of 4" above the final grade. Upon installation, the slip coupling should be opened (or extended) 2" to allow the coupling to both extend and retract. The slip coupling shall be installed with the large end toward the meter base.

 A Touchstone Energy® Cooperative  MAIN OFFICE: 270-765-6153	PAGE 2 OF 2		
	DRAWN BY: MATTHEW VULETA	UNDERGROUND SERVICE FROM POLE-MOUNTED TRANSFORMER TO DWELLING/FACILITY	LAST REVISION
APPROVED BY: NOLIN RECC LINE DESIGN	12/17/2020		