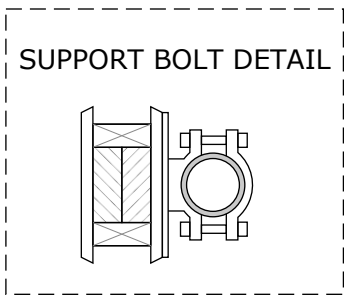
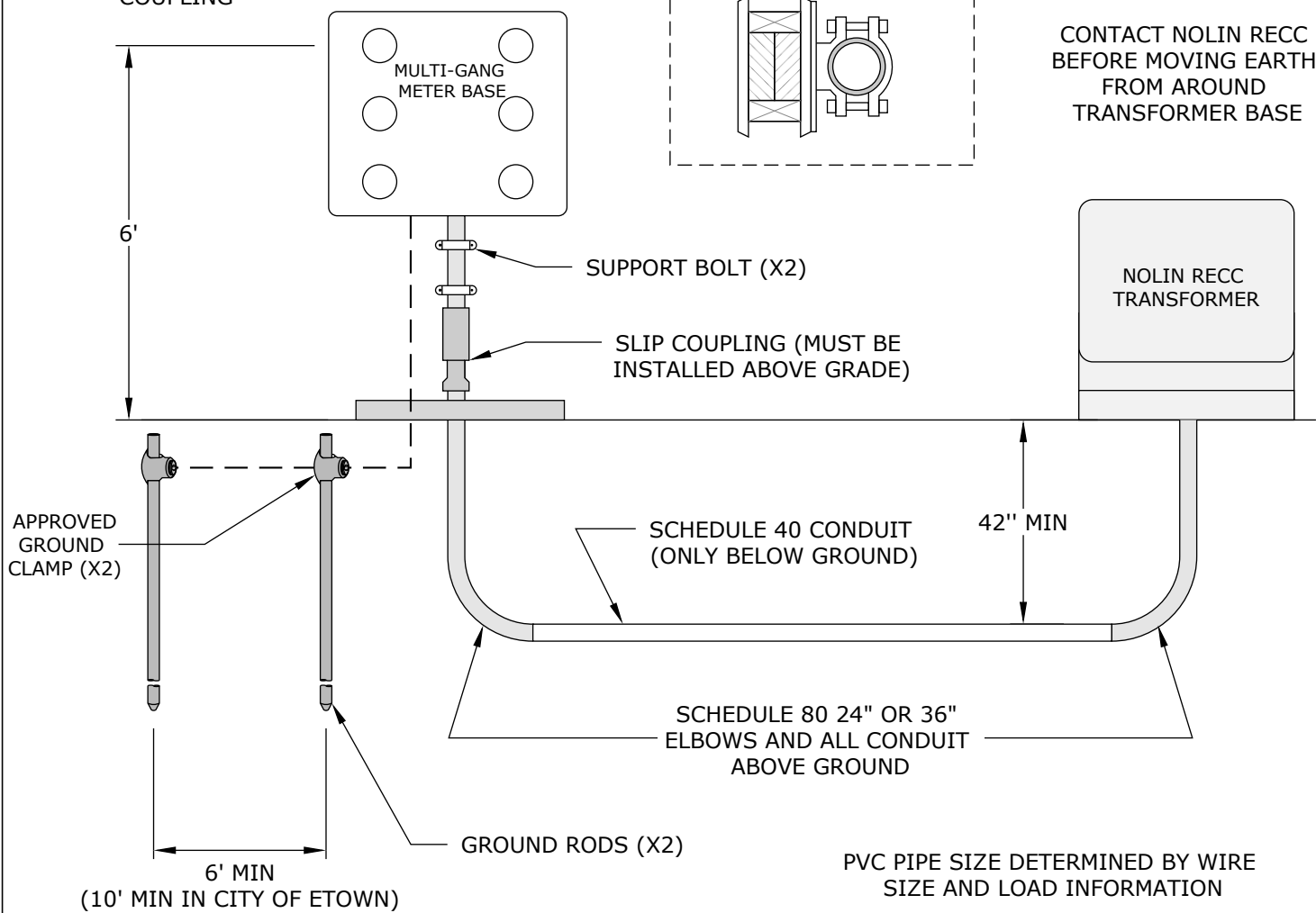


SUPPORT BOLTS MUST BE INSTALLED ABOVE OR ON TOP OUTER SHELL OF SLIP COUPLING



CONTACT NOLIN RECC BEFORE MOVING EARTH FROM AROUND TRANSFORMER BASE



CONDUIT MUST HAVE PULL STRING INSTALLED

PVC PIPE SIZE DETERMINED BY WIRE SIZE AND LOAD INFORMATION

NOTES

- All elbows (above and below ground) and conduit above ground shall be schedule 80 PVC. Schedule 40 PVC conduit is only acceptable below ground.
- 42" ditch from top of conduit to final grade will be inspected by Nolin's Service department before backfilling.
- Ground is no. 6 CU continuous ground wire (City of E-town requires 12" of bare ground wire from the meter base and the remainder is enclosed in PVC to 3" below ground level).
- Ground rods should be minimum 8' x 1/2" diameter solid copper rod or a 5/8" solid galvanized rod. Ground wire is attached with approved ground clamps.

- DIAGRAM NOT TO SCALE
- CONTACT NOLIN RECC LINE DESIGN DEPARTMENT BEFORE STARTING ANY WORK
- CALL 811 BEFORE DIGGING



MAIN OFFICE: 270-765-6153

DRAWN BY:
MATTHEW
VULETA
APPROVED BY:
NOLIN RECC
LINE DESIGN



UNDERGROUND SERVICE
FROM PAD-MOUNTED
TRANSFORMER TO MULTI-
GANG METER BASE

LAST REVISION

12/17/2020

NOTES

1. All meter base (service entrance) locations must be approved by Nolin’s Line Design Department prior to service installation.
2. Meter base must have a by-pass lever.
3. All electric connections, equipment, and equipment grounds shall comply with the National Electrical Code.
4. The member shall furnish and maintain for the life of the electrical service all conduits, conduit straps, grounds, disconnects, meter base, and all conductors beyond Nolin’s point of delivery.
5. Nolin shall furnish and maintain the meter and service drop.
6. Energizing of the member’s service is contingent upon an approved State or City electrical inspection.
7. The lower support bolt may be attached to the upper outside sleeve of the slip coupling.
8. Concrete pad to be poured below multi-gang meter base. Coordinate with Nolin’s Line Design Department before pouring concrete.
9. All underground conduit must have pull string installed (150 lbs test min).
10. No more than two 90 degree elbows are allowed in one run of conduit.
11. Conduit shall not be heated to bend.
12. The slip coupling should be installed a minimum of 4" above the final grade. Upon installation, the slip coupling should be opened (or extended) 2" to allow the coupling to both extend and retract. The slip coupling shall be installed with the large end toward the meter base.

 <p>A Touchstone Energy® Cooperative </p> <p>MAIN OFFICE: 270-765-6153</p>		PAGE 2 OF 2	
		DRAWN BY: MATTHEW VULETA	UNDERGROUND SERVICE FROM PAD-MOUNTED TRANSFORMER TO MULTI- GANG METER BASE
APPROVED BY: NOLIN RECC LINE DESIGN	12/17/2020		