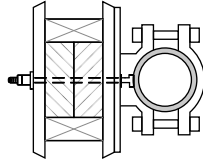


6" X 6" X 10' PRESSURE  
TREATED WOOD POST  
(X2) 30" min depth below  
grade

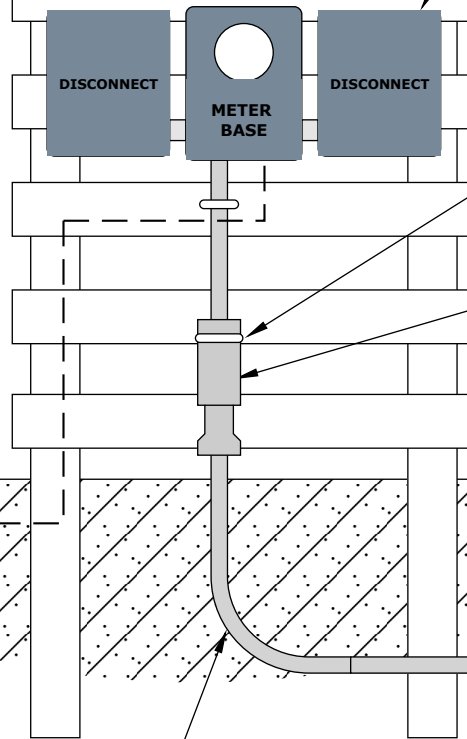
WIDTH MUST BE SUFFICIENT TO  
ACCOMMODATE METER BASE  
AND METER DISCONNECTS

MOUNT METER BASE  
AND DISCONNECTS

SUPPORT BOLT DETAIL



6'-6"



SUPPORT BOLT (X2)

SLIP COUPLING  
(MUST BE  
INSTALLED  
ABOVE GRADE)

CODE APPROVED  
GROUNDING

42" MIN

SCHEDULE 40  
ELECTRICAL CONDUIT  
BELOW GROUND

6' MIN  
(10' MIN IN CITY OF ETOWN)

SCHEDULE 80 24" OR 36" ELBOW  
AND ALL ELECTRICAL CONDUIT  
ABOVE GROUND

## NOTES

All elbows (above and below ground) and electrical conduit above ground shall be schedule 80 PVC. Schedule 40 PVC conduit is only acceptable below ground.

Trench depth from grade must be 42" to top of electrical conduit. Trench and conduit must be inspected by Nolin before backfilling.

Ground is no. 6 CU continuous ground wire (City of E-town requires 12" of bare ground wire from the meter base and the remainder is enclosed in PVC to 3" below ground level).

Ground rods should be minimum 8' x 1/2" diameter solid copper rod or a 5/8" solid galvanized rod. Ground wire is attached with approved ground clamps.

Underground service entrance electrical conduit shall enter the bottom left side of the meter base.

- DIAGRAM NOT TO SCALE
- CONTACT NOLIN RECC LINE DESIGN DEPARTMENT BEFORE STARTING ANY WORK
- CALL 811 BEFORE DIGGING

PAGE 1 OF 2



MAIN OFFICE: 270-765-6153

APPROVED BY:  
NOLIN RECC  
LINE DESIGN


UNDERGROUND SERVICE  
H-STRUCTURE  
(MULTI-DISCONNECT)

LAST REVISION

03/24/2023

## NOTES

1. All meter base (service entrance) locations must be approved by Nolin's Line Design Department prior to service installation.
2. Electrical conduit size to be designated by Nolin's Line Design Department.
3. Meter base must have a horn bypass or bypass lever. Do not use a small meter base.
4. All electric connections, equipment, and equipment grounds shall comply with the National Electrical Code.
5. The member shall furnish and maintain for the life of the electrical service all conduits, conduit straps, grounds, disconnects, meter base, and all conductors beyond Nolin's point of delivery.
  - In three phase applications, Nolin shall furnish the meter base.
6. Nolin shall furnish and maintain the meter and service drop.
7. Energizing of the member's service is contingent upon an approved State or City electrical inspection.
8. The lower support bolt may be attached to the upper outside sleeve of the slip coupling.
9. Electrical conduit must be secured to pole with one 2-hole conduit strap.
10. All underground conduit must have pull string installed (150 lbs test min).
11. No more than two 90 degree elbows are allowed in one run of electrical conduit.
12. Electrical conduit shall not be heated to bend.
13. The slip coupling should be installed a minimum of 4" above the final grade. Upon installation, the slip coupling should be opened (or extended) 2" to allow the coupling to both extend and retract. The slip coupling shall be installed with the large end toward the meter base.

PAGE 2 OF 2			
 A Touchstone Energy® Cooperative MAIN OFFICE: 270-765-6153		UNDERGROUND SERVICE H-STRUCTURE (MULTI-DISCONNECT)	LAST REVISION
	APPROVED BY: NOLIN RECC LINE DESIGN		03/24/2023