

NOTES

- DIAGRAM NOT TO SCALE
- CONTACT NOLIN RECC LINE DESIGN DEPARTMENT BEFORE STARTING ANY WORK
- CALL 811 BEFORE DIGGING

All elbows (above and below ground) and conduit above ground shall be schedule 80 PVC. Schedule 40 PVC conduit is only acceptable below ground.

All conduit depths will be based on final grade. Final conduit will be inspected by Nolin's Service department before backfilling.



MAIN OFFICE: 270-765-6153

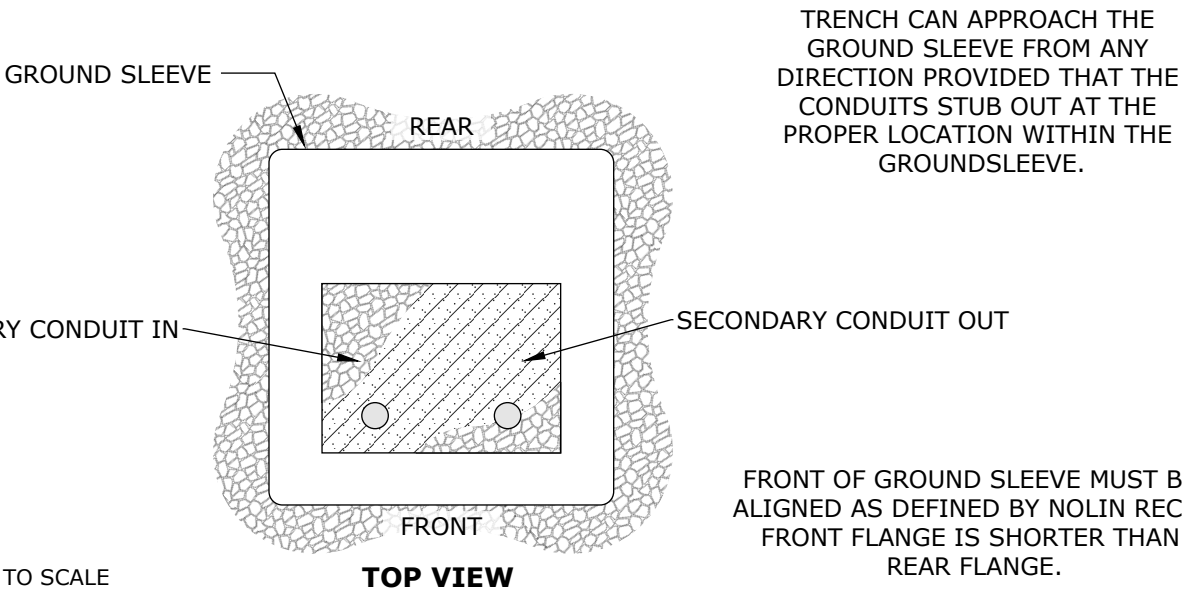
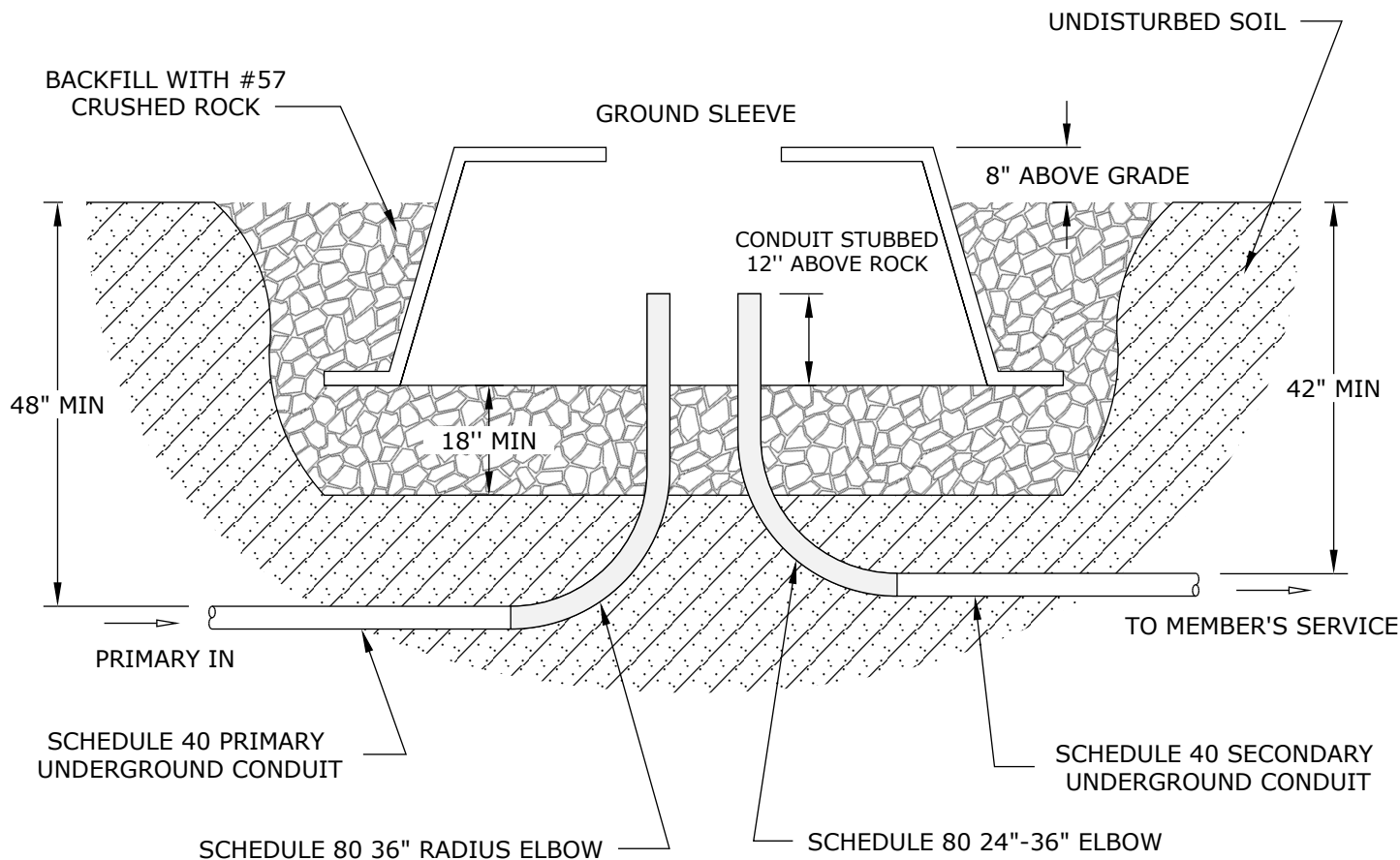
DRAWN BY:
MATTHEW
VULETA

APPROVED BY:
NOLIN RECC
LINE DESIGN

**SINGLE PHASE PRIMARY
TRANSFORMER
INSTALLATION**

LAST REVISION

12/17/2020



- DIAGRAM NOT TO SCALE
- CONTACT NOLIN RECC LINE DESIGN DEPARTMENT BEFORE STARTING ANY WORK
- CALL 811 BEFORE DIGGING

TOP VIEW



MAIN OFFICE: 270-765-6153

DRAWN BY:
MATTHEW
VULETA
APPROVED BY:
NOLIN RECC
LINE DESIGN


**SINGLE PHASE PRIMARY
TRANSFORMER
INSTALLATION**

LAST REVISION

12/17/2020

NOTES

1. All transformer locations must be approved by Nolin’s Line Design Department prior to service installation.
2. All electric connections, equipment, and equipment grounds shall comply with the National Electrical Code.
3. The member shall furnish and maintain for the life of the electrical service all conduits, conduit straps, grounds, disconnects, meter base, and all conductors beyond Nolin’s point of delivery.
 - In three phase applications, Nolin shall furnish the meter base.
4. Nolin shall furnish and maintain the meter.
5. Energizing of the member’s service is contingent upon an approved State or City electrical inspection.
6. All underground conduit must have pull string installed (150 lbs test min).
7. No more than two 90 degree elbows are allowed in one run of conduit.
8. Conduit shall not be heated to bend.

 <small>A Touchstone Energy Cooperative</small> MAIN OFFICE: 270-765-6153	PAGE 3 OF 3		
	DRAWN BY: MATTHEW VULETA	SINGLE PHASE PRIMARY TRANSFORMER INSTALLATION	LAST REVISION
APPROVED BY: NOLIN RECC LINE DESIGN	12/17/2020		