

- DIAGRAM NOT TO SCALE
- CONTACT NOLIN RECC LINE DESIGN DEPARTMENT BEFORE STARTING ANY WORK
- CALL 811 BEFORE DIGGING

NOTES	
All elbows (above and below ground) and conduit above ground shall be schedule 80 PVC. Schedule 40 PVC conduit is only acceptable below ground.	
All conduit depths will be based on final grade. Final conduit will be inspected by Nolin's Service department before backfilling.	



MAIN OFFICE: 270-765-6153

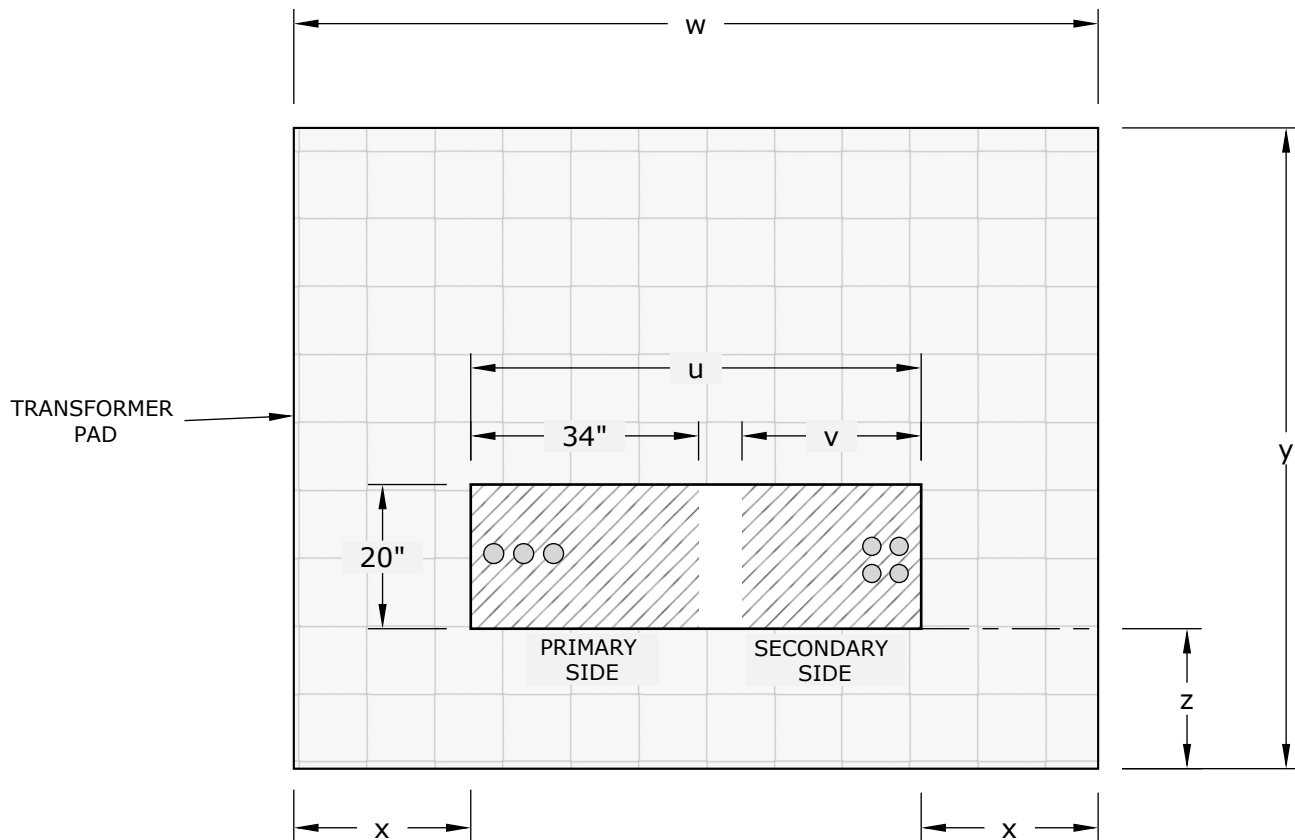
DRAWN BY:
MATTHEW
VULETA

APPROVED BY:
NOLIN RECC
LINE DESIGN

THREE PHASE PRIMARY TRANSFORMER INSTALLATION

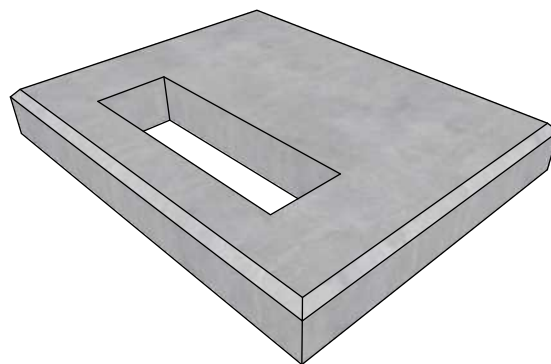
LAST REVISION

1/28/2021



**TOP VIEW
(PAD ONLY)**

ALL PRIMARY AND SECONDARY CONDUITS MUST BE INSTALLED WITHIN THEIR RESPECTIVE SHADED REGIONS



ALL TRANSFORMER PADS MUST BE 12" THICK, WITH A 10" BASE OF #57 ROCK. ALL TRANSFORMER PADS MUST BE REINFORCED WITH FIBER OR REBAR REINFORCEMENT. SEE NOTES 7 AND 8

KVA	u	v	w	x	y	z
75	59	24	100.5	20	60	12
150	59	24	100.5	20	60	12
225	62	27	103.5	20	68	12
300	62	27	103.5	20	68	12
500	62	27	103.5	20	72	12
750	62	27	103.5	20	78	12
1000	62	27	103.5	20	84	12
1500	62	27	103.5	20	106	12
2000	68	33	117.5	24	108	12
2500	71	33	120.5	24	108	12



A Touchstone Energy Cooperative

MAIN OFFICE: 270-765-6153

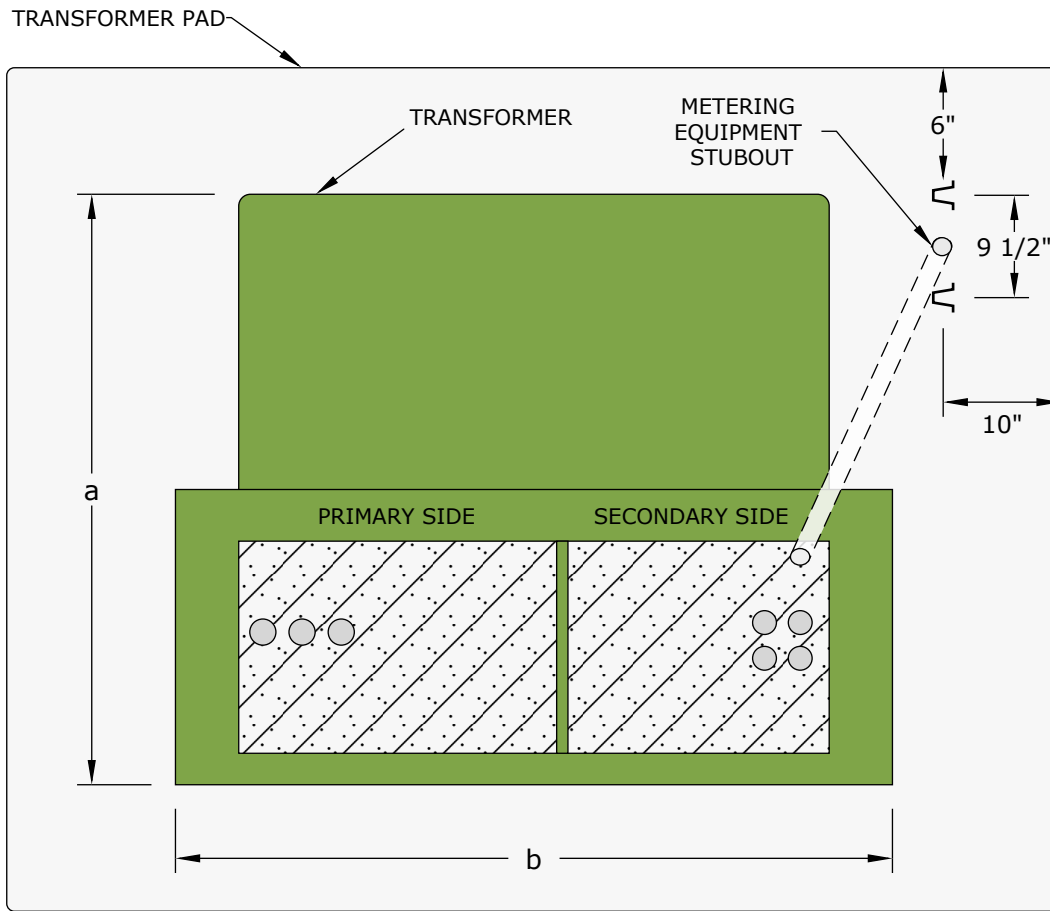
DRAWN BY:
MATTHEW
VULETA

APPROVED BY:
NOLIN RECC
LINE DESIGN

**THREE PHASE PRIMARY
TRANSFORMER
INSTALLATION**

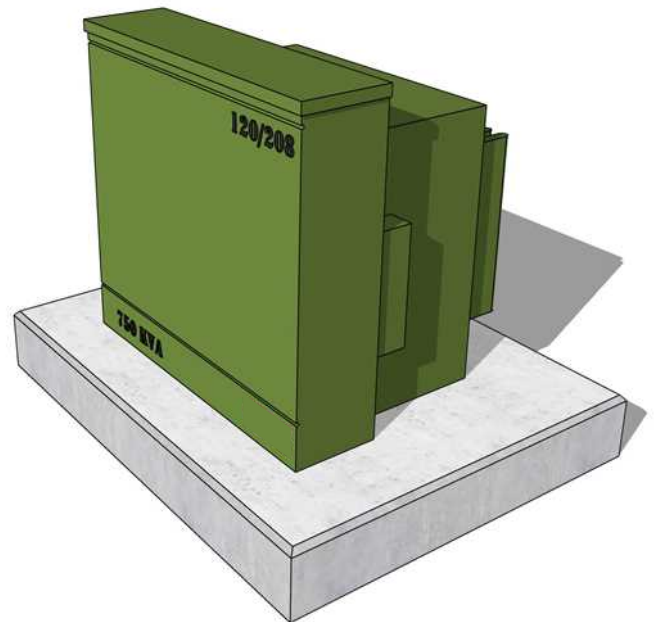
LAST REVISION

1/28/2021




TOP VIEW

KVA	a	b
75	45.5	63.5
150	49.5	63.5
225	51.5	66.5
300	49.5	66.5
500	51.5	66.5
750	55.5	66.5
1000	55.5	66.5
1500	58.5	66.5
2000	59.5	72.5
2500	61.5	75.5



NOTES

1. All transformer locations must be approved by Nolin's Line Design Department prior to service installation.
2. All electric connections, equipment, and equipment grounds shall comply with the National Electrical Code.
3. The member shall furnish and maintain for the life of the electrical service all conduits, conduit straps, grounds, disconnects, meter base, and all conductors beyond Nolin's point of delivery.
 - In three phase applications, Nolin shall furnish the meter base.
4. Nolin shall furnish and maintain the meter.
5. Energizing of the member's service is contingent upon an approved State or City electrical inspection.
6. All underground conduit must have pull string installed (150 lbs test min).
7. No more than two 90 degree elbows are allowed in one run of conduit.
8. Conduit shall not be heated to bend.
9. The concrete transformer pad shall sit on a 10" base of #57 rock.
10. The concrete mix for the transformer pad shall be a minimum of 3000 psi. The concrete pad shall contain one of the following reinforcement options:
 - Two 6" grids of 1/2" rebar layered within the concrete.
 - One 6" grid of 1/2" rebar in addition to fiber reinforcement added to the concrete mix.
11. Metering equipment stubout must be 1" rigid metallic conduit.
12. Metering equipment stubout must include a 1" bonding bushing installed in the secondary side of the transformer pad.

 <small>A Touchstone Energy Cooperative</small> MAIN OFFICE: 270-765-6153	PAGE 4 OF 4		
	DRAWN BY: MATTHEW VULETA	THREE PHASE PRIMARY TRANSFORMER INSTALLATION	LAST REVISION
APPROVED BY: NOLIN RECC LINE DESIGN	1/28/2021		