

APRIL 2024



Keep right-of-way clear



Tree climbing safety

WHY KEEP THE RIGHT-OF-WAY CLEAR?

One of the most common causes of power outages is falling trees or branches on power lines. This is especially true during severe weather conditions like ice or wind. These can put stress on dead or weak vegetation causing them to come in contact with, or even cause significant damage to, electrical infrastructure.

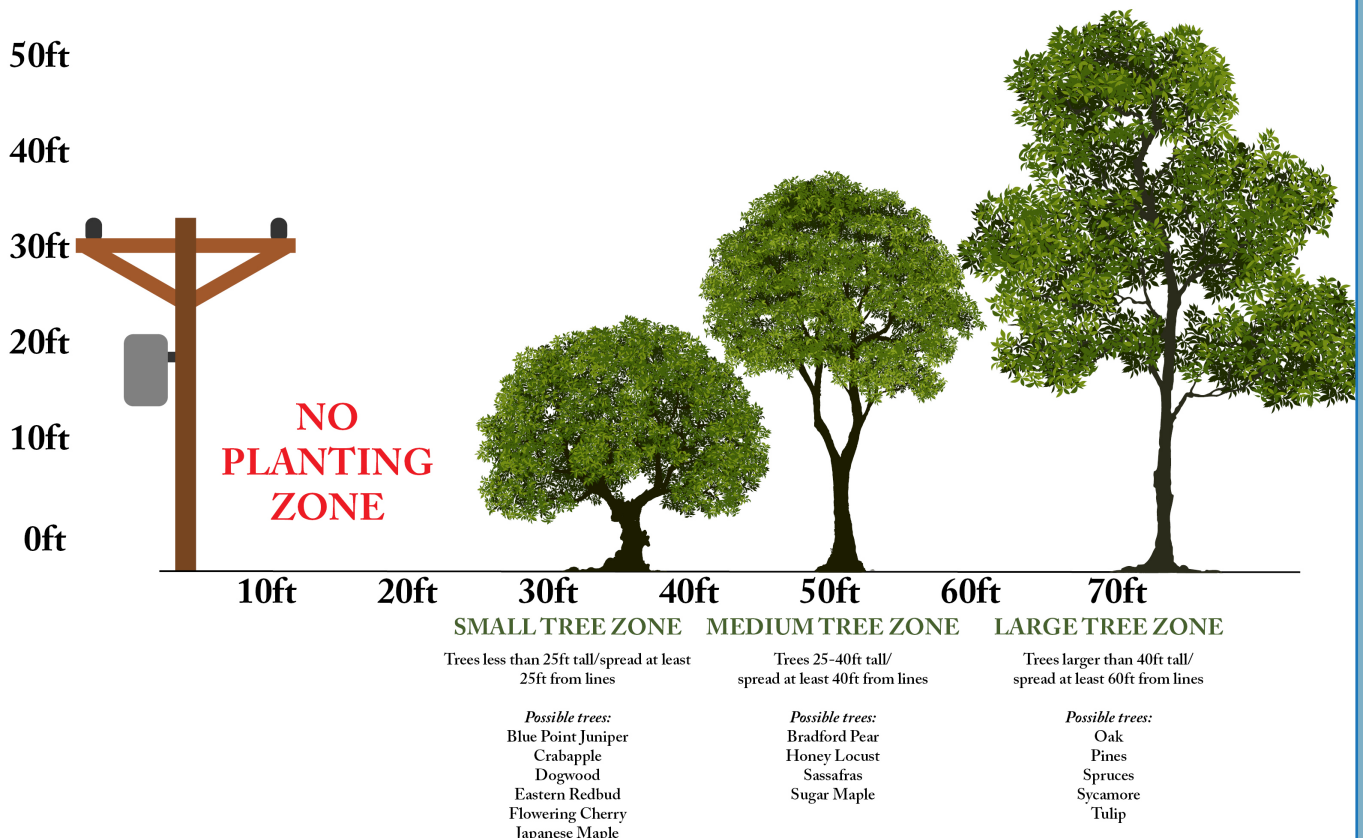
Nolin's subsidiary Wide Open Utility Service was established in 2021 to help in our efforts to clear and maintain right-of-way for the over 3000 miles of line in our service territory. While this hard-working team has made substantial progress in those three years, it is still up to each Nolin member to do our part in helping to keep the right-of-way clear.

We can do that by (1) planting outside of the right-of-way and by (2) reporting any potential issues such as branches on power lines to us (NEVER try to remove them yourself).

Why keep the right-of-way clear? The most important reason is safety. Vegetation that is in contact with a power line can cause a dangerous situation for anyone nearby. It also helps to reduce outages and potential damage to our system or your own property.

This spring, help keep everyone safe and the lights on by maintaining a clear right-of-way and reporting any issues to us.

Our right-of-way corridors are cleared on both sides of the utility pole to help prevent fires, outages and other hazards. If you plant trees, please follow these recommendations.



Never climb trees near power lines

