

# NOLIN NEWS



f X @ www.NolinRECC.com

JANUARY 2025

## Comments from the President and CEO

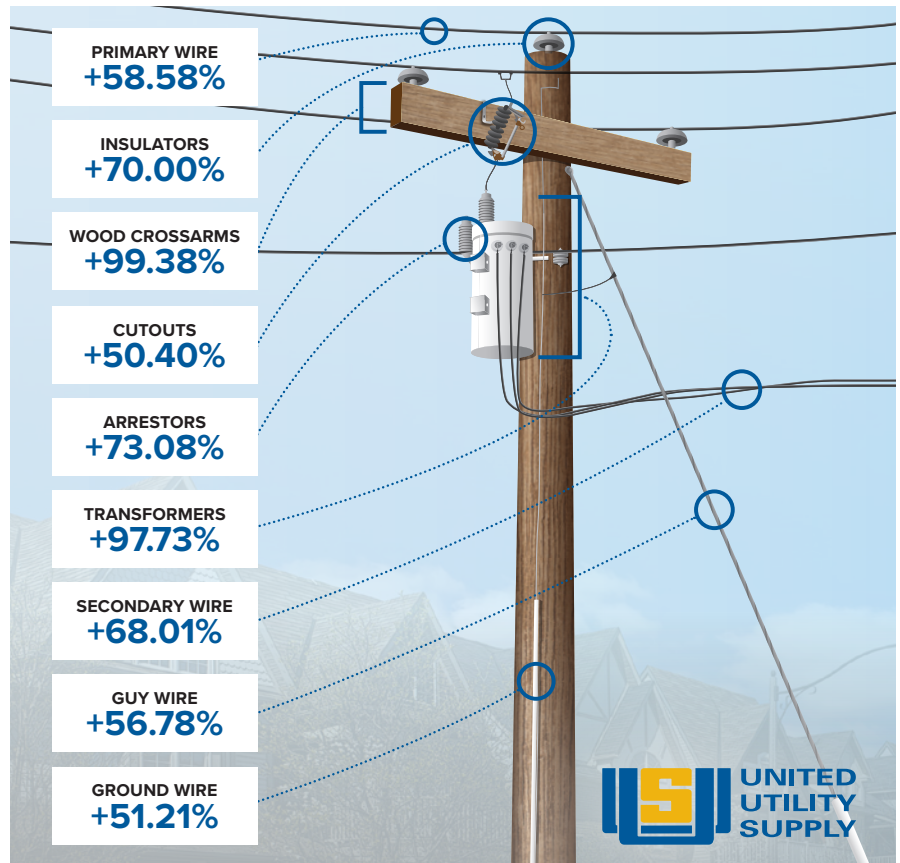
### Rising costs

If you are a regular reader of this magazine or attend any of our member meetings, you've almost certainly heard me mention the rising costs associated with nearly all aspects of our industry. In short, our work at Nolin RECC is complicated by the effects of inflation.

For you, me and all those we care about, the most direct and potentially harmful effects of inflation can be seen on the grocery bill or at the gas pump. While those are the most obvious indicators of rising costs for most of us, those same increases can be felt across numerous markets and industries—notably in the electric utility business.

The graphic at right demonstrates the cost increase since 2020 for many of the common pieces of hardware we use to provide our service on a daily basis. Remember, while these increases themselves may seem extreme, this is just one aspect of our business. Labor costs, input fuels and power generation and transmission costs have all increased as well.

These financial challenges for Nolin RECC make our focus on efficiency and lean operation even more important. Provided it isn't structurally compromised, we need to leave older plant infrastructure in service when possible because the cost of replacement is so high. When we do build new plant or replace existing equipment, we need to do so in a manner that will maximize its longevity and useful life. Ground line protection, pole toppers and appropriate installation methods are



Costs have risen for many utility components in Kentucky from 2020-2024. Information provided by UUS.

all necessary to give these assets the best chance of lasting 40-plus years.

When each of you turn your lights off or roll back your thermostat, especially during times when we request you voluntarily limit your usage, you're not only reducing your electric bill; you are also helping Nolin manage its wholesale demand costs and sustain high reliability.

As we move through this new year, let's all continue to support each other to navigate these uncertain socioeconomic

times. Nolin will keep working hard to prevent the full effects of our inflationary pressures from impacting each of you.



by Greg Lee

From the  
President/CEO

# Membership matters

Capital credits are one of the benefits of being a member-owner of a cooperative like Nolin RECC. As a not-for-profit cooperative, our owners are the members we serve. When there is money left after all expenses are paid at the end of the year, these margins are allocated to members based on their usage for that year. When the co-op is in a financial position to do so, those margins are returned to the members who were allocated margins.

In 2024, Nolin retired just over \$1.6 million in previously allocated capital credits for the years 1999 and 2023. That brings the total of the last six years to more than \$21 million returned to members in capital credits.

Nolin Director Gene Straney, left, presents a capital credit check to Mayor Jeff Gregory for the City of Elizabethtown. Photo: Jodie Thompson



## Operation Round-Up

# Spotlight: Friends of Hardin County Public Library

Operation Round-Up is a voluntary program in which Nolin RECC members choose to round up their monthly bill to the nearest dollar. That change goes into a fund administered by a volunteer board of directors and awarded to local nonprofits and teachers in the form of grants.

One of the 2024 recipients of Operation Round-Up's Community Impact Grants was the Friends of the Hardin County Public Library. This 501(c)3 nonprofit serves as the local partner for Dolly Parton's Imagination Library in Hardin County.

The Dolly Parton Imagination Library partners with donors and other organizations to gift books monthly to children from birth to their 5th birthday. The books are mailed individually to children's homes and are addressed personally to each child. "Children love receiving these high-quality books and parents appreciate the opportunity to foster literacy in their littlest ones at no cost, regardless of income," says President of the Friends of the Hardin County Public Library Nancy Shores.

The Operation Round-Up money granted to the Friends of the Hardin County Public Library helped provide books to 1,852 local children last October.

For more information about Nolin Operation Round-Up, visit [www.nolinrecc.com](http://www.nolinrecc.com). To donate or to register a child for the Dolly Parton Imagination Library, visit [imaginationlibrary.com](http://imaginationlibrary.com).



Pictured are some of the books that children receive when they are enrolled in the Dolly Parton Imagination Library. Photo: Nancy Shores

# Cooperative Principle – Education, Training and Information

## Investing in tomorrow

Photos: Sarah Fellows

Supporting our local schools not only invests in students today, but also in leaders for tomorrow. In addition to our yearly scholarship program and Washington Youth Tour experience, Nolin makes a donation to each area high school. This fall, we delivered \$1,000 checks for the schools to use to serve the needs of their students.



North Hardin High School Principal Jeff Maysey



LaRue County High School Assistant Principal Shannon Hall



John Hardin High School Principal Mark Wells



Central Hardin High School Principal Tim Isaacs




Elizabethtown High School Assistant Principal Trevor Ervin, left, Principal Josh Henderson and Assistant Principal Karl Olive

*Not pictured, Fort Knox Middle High School*

### Reminder to high school juniors

The Washington Youth Tour application deadline is February 3!

Find details and applications at [www.nolinrecc.com](http://www.nolinrecc.com).



HOWCOURA/DDBE STOCK

## Safety Education



J.J. Brown, general foreman for vegetation management at Nolin and Wide Open Utility Service Crew Leader Kyle Vigneau provide training on proper notches when felling trees to Kenergy Lineman Alec Moser at Big Rivers Electric Corporation. Photo: Stephanie McCombs



A Touchstone Energy® Cooperative

## How to reach Nolin RECC

### ELIZABETHTOWN OFFICE

411 Ring Road | Elizabethtown, KY 42701  
8 a.m.–5 p.m., Mon-Fri | (270) 765-6153

### RADCLIFF PAYMENT CENTER

101 West Lincoln Trail Blvd.  
Radcliff, KY 40160  
Payment kiosk and night drop only

### TOLL-FREE BUSINESS CALLS

1-888-637-4247

### PAY DIRECT BY PHONE TOLL FREE

1-855-938-3651

### FOR EMERGENCIES

(270) 765-6153

### www.NolinRECC.com

Email: Comments@NolinRECC.com

### PRESIDENT/CEO

Greg Lee

### BOARD OF DIRECTORS

David P. Brown, Chair  
Gene Straney, Vice Chair  
Rick Thomas, Secretary-Treasurer  
Mark Cochran  
Linda Grimes  
Lawrence Ireland

### ATTORNEY

Mike Pike

### EDITOR

Sarah Fellows, CCC



Download our SmartHub App



## Spreading cheer

Nolin employees were busy during November and December helping our communities get ready for the holiday season.



Nolin Line Techs Blake Copeline, left, and Ben Sedano set up the Nolin display at Christmas in the Park in Elizabethtown. Photo: Nolin Line Tech Tyler Hornback



To honor their service all year, Nolin has installed a parking sign reserving a spot for veterans who come to our Elizabethtown office at 411 Ring Road. Photo: Sarah Fellows



J.J. BROWN

## Right-of-way work schedule

To keep our members informed, we are providing information about where our right-of-way crews plan to work each month. This information is subject to change.

January 2025: Smithersville Substation # 1 and #2, South Wilson Road, Robinbrooke Blvd., Hutcherson Lane, North Dixie Ave., Mount Zion Road, Teresa Road.

Free wood chips are available, call (270) 600-2714 for details.

IRISIMAGES/ADOBESTOCK

